

**LEADING THE CHARGE
IN ELECTRIC POWERTRAIN
INNOVATION.**

ELECTRIC TRACK DRIVE



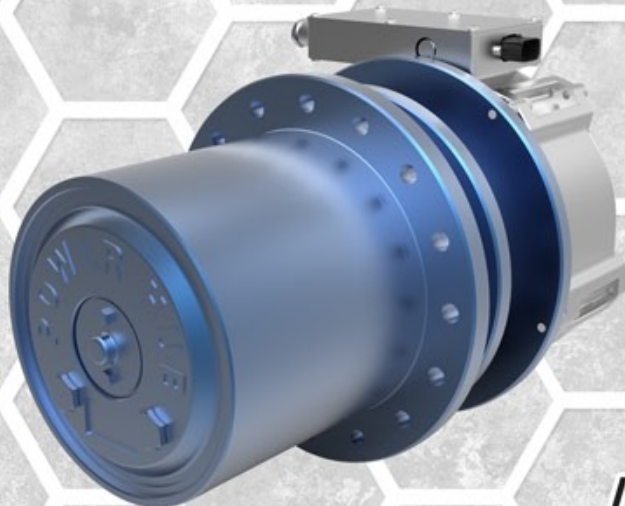
EXCAVATOR POWERTRAIN TRACK DRIVE

VTe-12 OMNIGEAR **M19** MAGELEC **LVMCU**

**ROBUST
BEARING PACKAGE
FOR LONG LIFE**

**OPTIMIZED
POWER
DENSITY**

**EFFICIENT
ELECTRO-
MECHANICAL
SYSTEM**



**HIGH
RELIABILITY
/ LOW MAINTENANCE**

F E A T U R I N G

12.000 NM OMNIGEAR PLANETARY GEAR DRIVE • EFFICIENT MAGELEC WEG-COOLED AXIAL FLUX MOTOR
MAGELEC LOW VOLTAGE MCU

OMNI
POWERTRAIN TECHNOLOGIES