

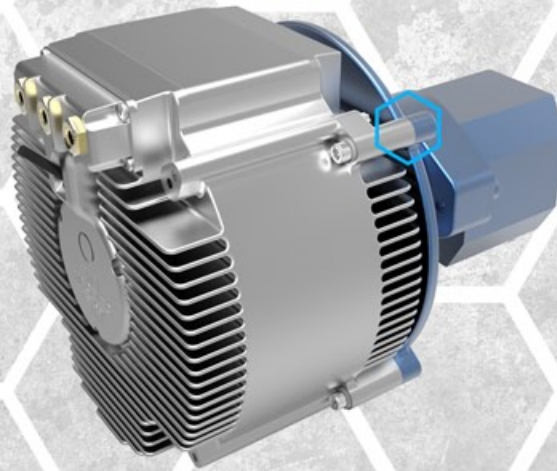


**LEADING THE CHARGE
IN ELECTRIC POWERTRAIN
INNOVATION.**

OMNI DIRECTION

EXCAVATOR POWERTRAIN SWING DRIVE

SLE-06 OMNIGEAR **M15** MAGELEC **LVMCU**



**EFFICIENT
ELECTRO-
MECHANICAL
SYSTEM**

**PRECISE
CONTROL**

**HIGH
RELIABILITY
/ LOW MAINTENANCE**

FEATURING

6,000 NM OMNI GEAR PLANETARY SWING DRIVE • EFFICIENT MAGELEC AIR-COOLED AXIAL FLUX MOTOR
ELECTRIC MULTI-DISC BRAKE • MAGELEC LOW VOLTAGE MCU • INTEGRATED OUTPUT PINION

OMNI
POWERTRAIN TECHNOLOGIES